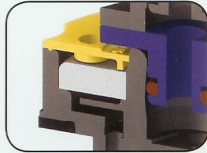


# PRO-FILL Features- Page 1 of 2



## PRO-FILL



### Flame Arrestor

Our flame arrestor inside of each valve makes Profill™ the safest battery watering system on the planet. Approved by major battery manufacturers, Pro-fill™ has this built-in safety feature that is necessary for all applications such as golf car, utility vehicle, Sweeper, Scrubber, Pallet Jack, or anywhere batteries are used in an enclosed space or otherwise potentially dangerous environments.



### Patented Manifold

Our patented manifold provides for the quickest and easiest installation period!



### Winged Valves

Winged Valves make installation quicker and easier than before. Buy a precut kit and leave your tools at home. With the pre-cut Pro-Fill system, no tools are necessary for installation.



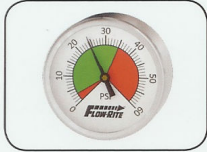
### 3-Port Swivel Tee

Our patented 3-Port Swivel rotates a full 360 degrees allowing for the most versatile installation. No more worries about kinked tubing or the need for extra plumbing fittings. The swivel also integrates an easy in, hard out design to protect the O-ring.



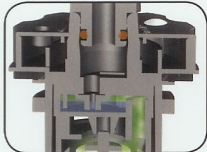
### Clampless Polypropylene Tubing

Our patented clampless tubing installs in half the time of clamp style tubing and holds twice as well. Unlike clear PVC tubing, our patented tubing will not break down and cause system failure.



### Wide Pressure Range

With Pro-Fill's™ patented technology, you don't have to buy expensive water supplies to generate high pressure and flow. Our variable pressure system will work from 3 to 35 PSI (static) with minimum flow rate of 2 GPM.



### Internal Water Lock

Perhaps the most important and least known feature of the Pro-Fill™ valve, the internal water lock prevents gases from traveling between cells. In the event of a fire, this eliminates the possibility of flame propagation between cells via the watering system.

PRO-FILL

# PRO-FILL Features- Page 2 of 2



## PRO-FILL



### Protective Shroud

The shroud protects the internal displacer from damage. Whether it be from plate growth, during installation, shipping, or any other time. It further protects the valve from foreign particles in the battery entering and "clogging" the water system.



### Acid Resistant Components

Just like our predecessor systems, all Pro-Fill™ components are made of polypropylene. This means all materials are acid, temperature, and impact resistant.



### De-Gas Chamber

The Pro-Fill valve has a built in De-gassing chamber (similar to the factory vent caps) which allows the cell to expel the naturally occurring hydrogen and oxygen gases. The standard cap seen here disperses the gases in a manner which dilutes them with the outside air, reducing the risk of ignition.



### 5 Year Warranty

We stand behind all of our SPW systems. We offer a full 5 year warranty on all Pro-Fill™ components (excluding water supplies). Each valve is date stamped with the shift, day, month and year to ensure quality. All products are made in the U.S.A. by Flow-Rite Controls, an ISO 9001-2008 company.



**Distributed By-**  
**Jan Watercraft Products**  
13354 Greenleaf Lane  
Grand Haven, MI 49417  
Ph- 616 822 7587

PRO-FILL